



REVISTA BRASILEIRA
DE ENTOMOLOGIA

Rev. bras. Ent. 13 (2): 59-61

30.VI.1975

A SIMPLE ISOHERMIC CHAMBER FOR INSECT REARING

Sebastião Laroca¹
Joaquim C. Sena Maia²
Graci M. F. Oliveira³

ABSTRACT

The construction of a simple, low cost constant temperature chamber, which has been successfully used for rearing two species of insects (one termite, one beetle), at temperatures of 18°C, 22°C and 27°C, is described.

Laboratory rearing is a common problem in the study of ontogeny, biological control, systematics, etc. This kind of rearing usually requires the use of CT rooms which reproduce temperature conditions of the habitat. Sometimes, in experimental studies, it is necessary to study the behavior or development of an insect at various different temperatures.

In this paper, a constant temperature chamber is described, which because of its simplicity and low cost would be useful for laboratory experiments.

CONSTRUCTION AND USE OF THE CHAMBER

The following material was used for the confection of the chamber: a box of isopor (30 x 25 x 18 cm), three 15 W bulbs, two meters of electrical flex, three sockets, one plug, one aquarium thermostat without the protecting glass, and one thermometer.

The lid of the box was perforated so that the socket and the plug were adjusted to the hole. The bulbs were connected in parallel together with the thermostat (fig. 1).

Contribuição nº 355 do Departamento de Zoologia, Universidade Federal do Paraná, Caixa Postal 756, 80.000 Curitiba, Paraná, Brasil. 1, 3, Departamento de Zoologia; 2, Departamento de Informática.

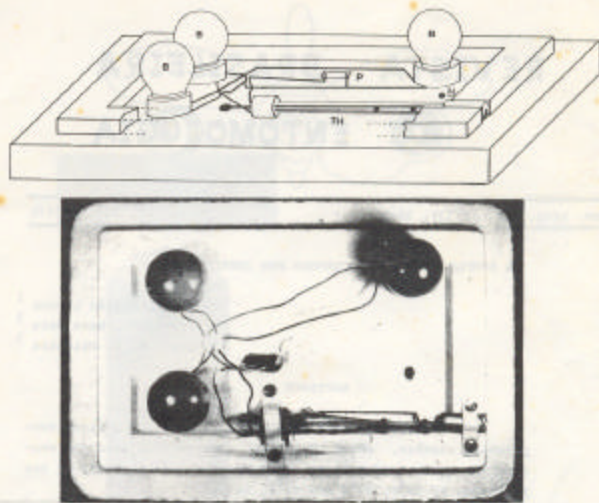


Fig. 1. Lid of the isothermic chamber. B, 15 W bulbs; P, plug; T, thermostat; H, hole for the thermometer

The temperature was controlled by adjustment of the thermostat. For temperatures above the environment, the chamber works without any complication, for temperatures below those of the environment, it is necessary to place the chamber in common refrigerator and regulate the thermostat to obtain the correct temperature.

The chamber has already been tested in two experiments with satisfactory results. One of the authors, G.N.F.O. (of Oliveira, *in MS*), reared specimens of *Neotarsus arthurweileri* (von Rosen, 1912) (Isoptera: Kalotermitidae) on an artificial diet (Harley & Willson, 1968) at a constant temperature of 25°C. P. McVadyen (Department of Land, Queensland, Australia) reared specimens of *Anaxessis fusca* (Rug, 1829) (Coleoptera, Chrysomelidae) at a temperature of 18°C with this chamber placed in a refrigerator as described above, and at 31°C, outside the refrigerator.

The constant temperature chamber described above presents the following advantages: low cost and easy manufacture, and a heat source which does not considerably alter the relative humidity of the air within the chamber.

ACKNOWLEDGEMENTS

The authors express their gratitude to Mr. P. McFadyen for the tests carried out with the chamber and to Dr. L. A. Foerster for the translation of the text. The authors also thank Mr. J. Winder for reading and criticism of the manuscript and Mr. H. Gioppo for the confection of the drawing.

REFERENCES

- Harley, W. & M. M. Willson, 1968. Propagation of a cerambycid borer on a seridic diet. *Canad. J. Zool.* 46 (6): 1265-1266.
- Oliveira, G. M. F., 1975. *As espécies brasileiras do gênero Necternes Holmgren, 1811 (Isoptera, Kalotermitidae)*. M. Sc. Dissertation, Universidade Federal do Paraná, Curitiba. 130 pp.